



FAST
GROUPE CLAIRE

BiDi

acoustic loggers

range

Leak detection

*Smart acoustic monitoring
of water networks!*



A COMPLETE RANGE ADAPTED TO
ALL TYPES OF PIPES



PLUG & PLAY INSTALLATION
FOR IMMEDIATE MONITORING



HIGH DETECTION RELIABILITY FOR EFFICIENT
MANAGEMENT OF WATER LOSSES

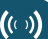


LONG BATTERY
& SERVICE LIFETIME



Acoustic version 



Hydrophone version 





A complete range for every water network



To meet all the monitoring needs **of drinking water networks**, the BiDi range is now available in three models:

- Radio,
- LTE-M,
- LoRaWAN.

Each model is available in two sensor versions:

- **Acoustic version:** this body-sound model is ideal for metal pipes
- **Hydrophone version:** ideal for any material, especially plastic pipes.



New for 2025: launch of the **BiDi LTE** - the latest technological evolution in the range, now available in a hydrophone version AND in an acoustic version based on body-sound technology.

This innovation brings our range to the next level, delivering full LTE coverage while embracing the **future of communication with advanced long-range IoT technologies.**



BiDi loggers - the reliable choice to reduce water loss and accelerate leak detection.

Simple control and immediate monitoring: save time and optimize your interventions

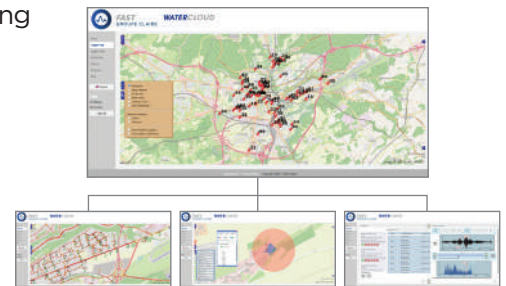


Deployment is simple and quick: through magnetic attachments in the water network or in contact with water depending on the version (acoustic or hydrophone).

Pre-configured at the factory for plug and play installation, BiDi loggers allow you to access the first results just one day after installation.

WATERCLOUD offers unique **centralized monitoring,** empowering smarter water management:

- **Intuitive dashboard with map** providing a clear overview of leak status and powerful insights from advanced measurement analysis;
- **Alarm function settings** for status changes;
- **Precise data monitoring** thanks to the history of noise listening;
- **Optionally integrate water network GIS data** into proprietary systems.



Data secured and hosted in Germany. Architecture compliant with current **cybersecurity requirements** (NIS2 preparation).

Precision and Reliability in Leak Detection: Acoustic Expertise for Maximum Performance



Our BiDi loggers guarantee early leak detection by **accurately prelocating the leak** within the affected section using precise multipoint correlation. Enhanced by intelligent algorithms that filter out environmental noise and minimize false positives, they enable intuitive searching even in noisy urban environments.

New LTE version with **major improvements**:

- **Extended Acoustic Sensitivity**: Featuring a new analog circuit for superior performance, especially in low (<100 Hz) and high (>1100 Hz) frequency ranges.
- **Optimized Monitoring**: Flexible deployment on any pipeline with up to 1 km between two BiDi loggers, perfect for both temporary and permanent monitoring campaigns.
- **Comprehensive Algorithm**: Performs analysis on 24,000 nighttime measurements, automatically identifying patterns and pinpointing potential leaks with unmatched precision.

Integrated temperature, humidity and vibration sensors ensure reliable monitoring and facilitate **preventive maintenance**.

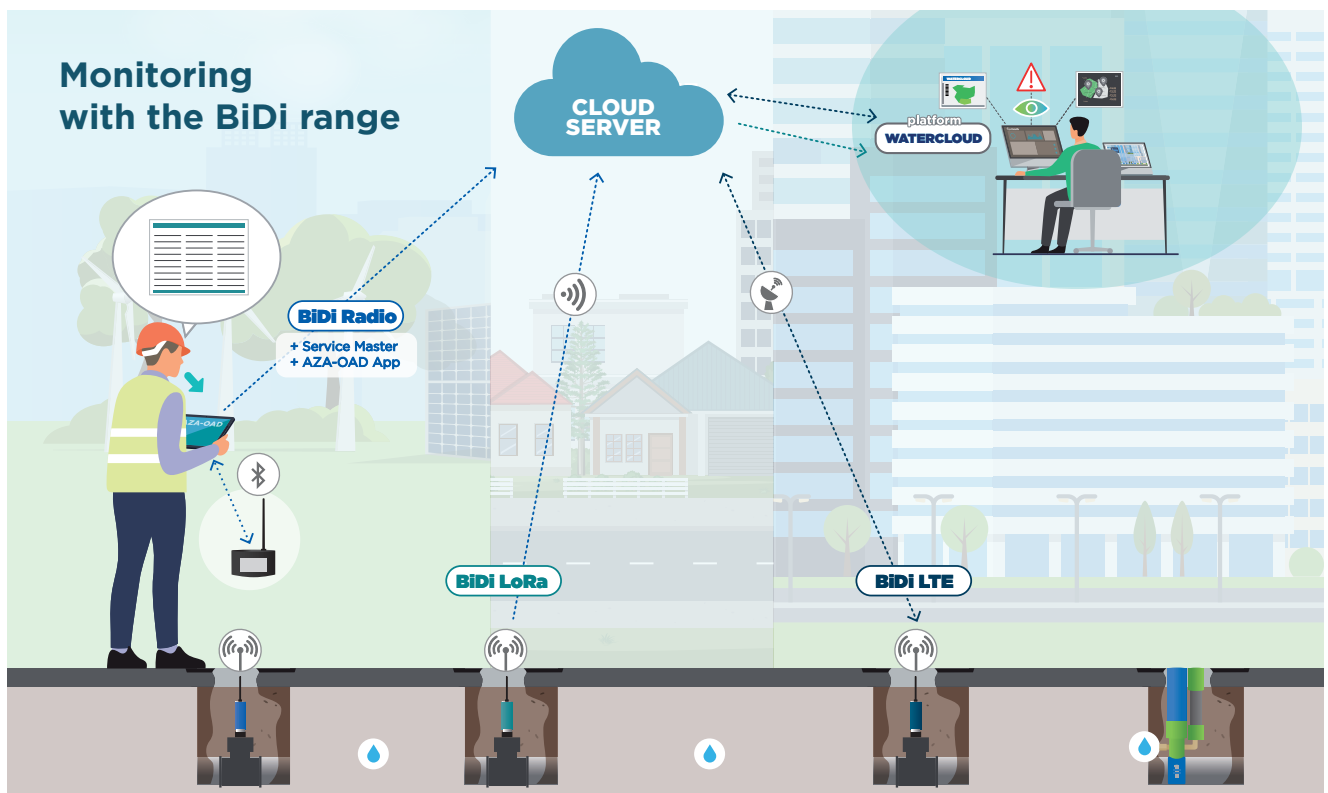
Designed to **withstand the even most challenging conditions**:

- **Waterproof stainless steel housing** (IP68),
- **Compact** and **robust** design with rubber bumper (optional),
- **Resistance** to immersion, shocks and extreme temperature variations,
- **Field-replaceable batteries**.

Accessories such as protective covers, **antenna** extensions or **carrying cases** are available to adapt to all field configurations.



Protective cover (optional)



Optimised connectivity and long battery life: your network under 24/7 monitoring



Whether it's, isolated areas without cellular coverage or daily monitoring needs, our BiDi loggers adapt to any field situation.

Model	Version	Setting		Network		Correlation		Watercloud	
		local	remote	private	public	local	remote	consultation	programming
BiDi RADIO 433 MHz	acoustic								
	hydrophone	•		•		•		•	
BiDi LTE CatM1 / NB1	acoustic								
	hydrophone		•		•		•	•	•
BiDi LoRa 868 MHz*	acoustic	•		•	•	•		•	
	hydrophone	•		•	•	•		•	

* And other frequencies.

Built to Last: Over 5 years of operation thanks to a **high-capacity battery** and smart energy-saving technology.



Produits_Claire App

All the product information in your pocket!



GRAPHIC DESIGN: leporcher.com | gabrieliora.com - IJUNUS 014/V1 - 09/25 - Printed on recycled paper



WATERCLOUD:
your management tool

Deployed individually, each prelocator can record noise data from a variety of pipes.